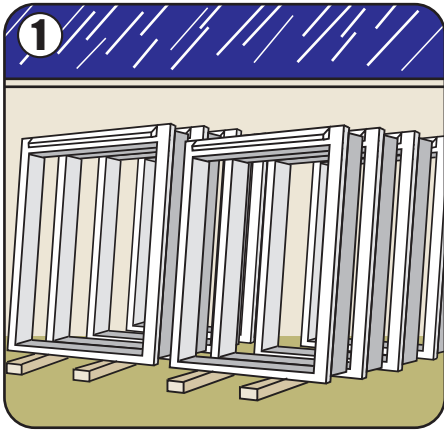
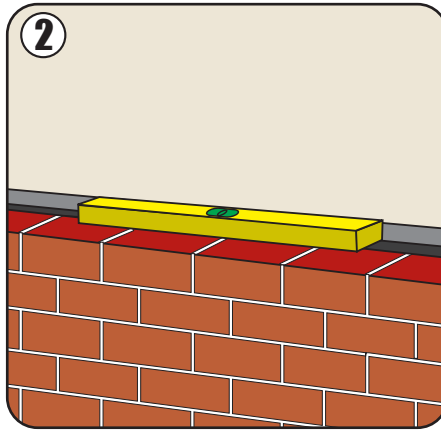


# New cavity closer system installation guide

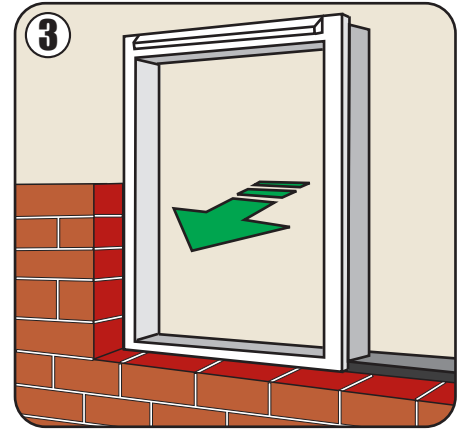
A quick and easy step by step guide to installing our unique cavity closer system.



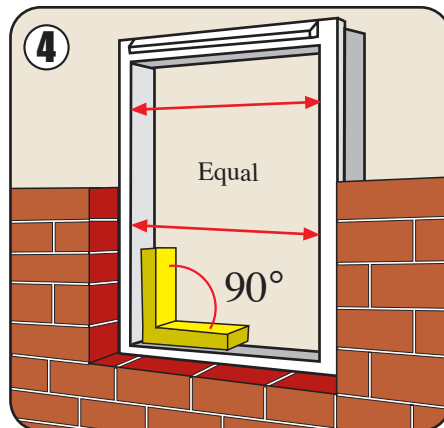
Cavity Closers are to be stored on site in an upright position, on timber batten in a sheltered area.



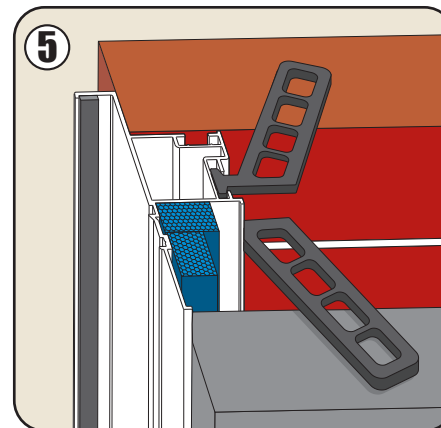
Ensure Closer is fitted on a level surface.



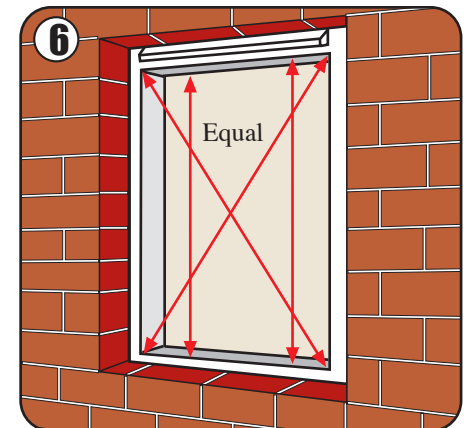
Closer must be inserted the correct way round i.e. flange and curved head section to the outside, and trickle vent head section at the top.



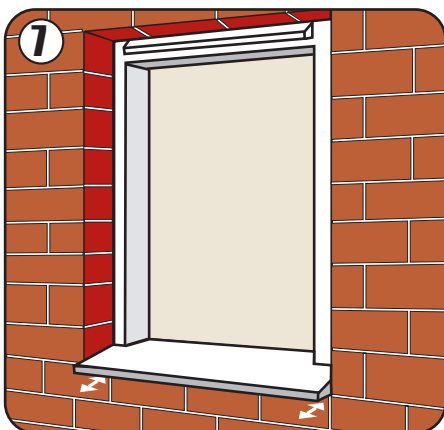
When bricking-in, ensure closer is square, not in twist and the sides remain undished, i.e. the internal dimension is the same at the top, middle and bottom.



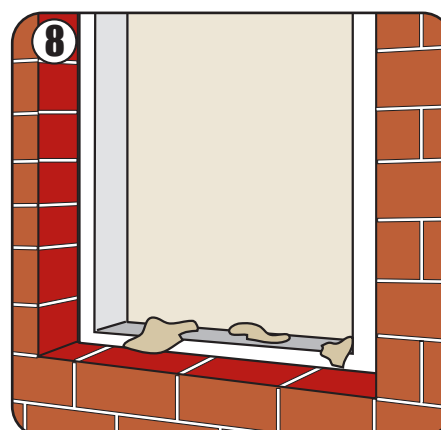
Closer is held in position by brick ties, inserted every third / fourth brick course, and alternately into brickwork inner skin.



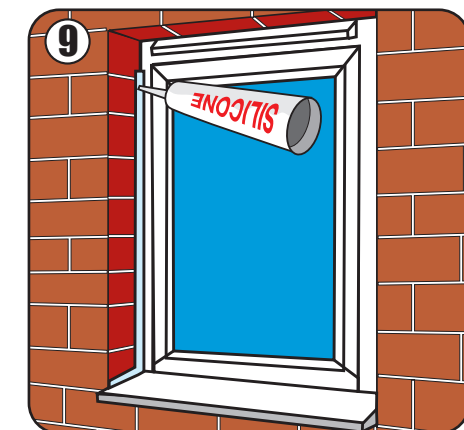
Ensure verticals are plumbed in both planes.



The closer must be fitted tight to the outside skin, this is critical to ensure correct sill overhang when windows are fitted.



Clean any excess mortar from the window reveal area, and ensure that the cavity closer is securely fixed into the brick/blockwork.



After window installation, apply a 6mm silicone bead joint all the way around the opening where PVC makes contact with brickwork